

Screw jacks

Special travelling nuts

Design features

Special travelling nuts are important for the safe and precise operation of systems with horizontally and vertically installed turning screws (type 2). If the critical screw speed is exceeded, the screws must be supported adequately.

This is where specially manufactured intermediate bearings and travelling nuts from Pfaff-silberblau come into play. They are available in various designs to suit requirements, e.g. for the SHE, MERKUR, HSE and SHG ranges.



A



B



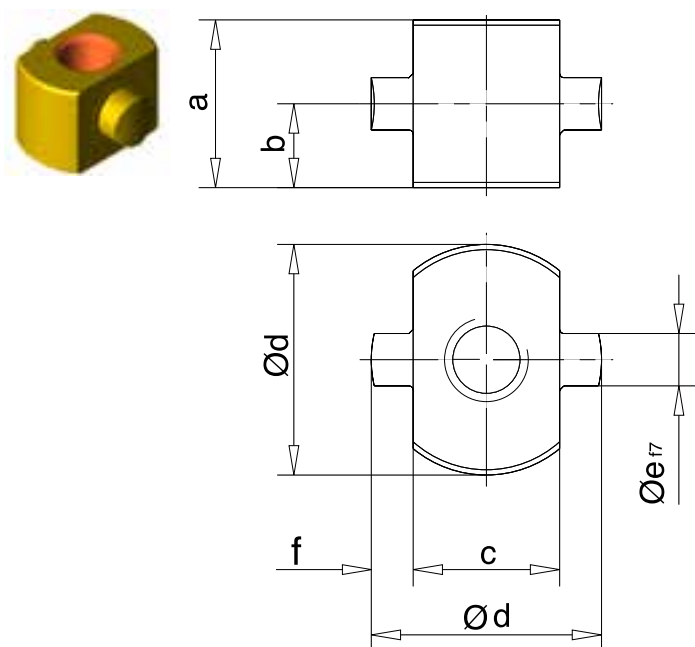
C

D

Special travelling nuts

Technical drawings and dimensions

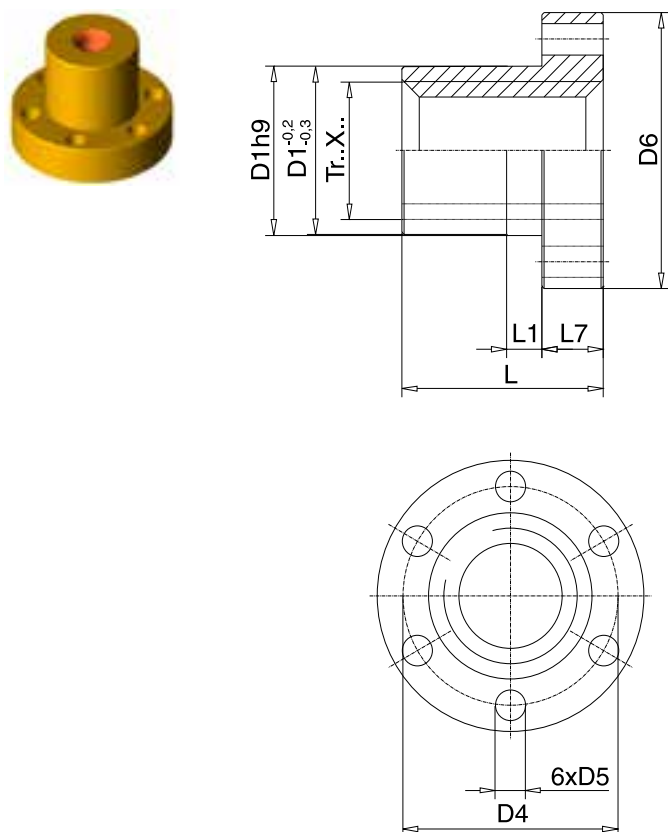
Travelling nut with trunnion LWZ



Range SHE/MERKUR M							
Size		a	b	c	Ød	Øe	f
0,5	M 1	45	22,5	35	50	14	7,5
1.1	M 2	50	25	40	60	18	10
3.1	M 3	60	30	50	80	25	15
5.1	M 4	70	35	62	95	35	16,5
15.1	M 5	90	45	80	130	50	25
20.1	-	120	60	92	150	65	29
25	M 6	145	72,5	120	190	75	35
35	M 7	on request					
50.1	M 8						

Range HSE							
Size		a	b	c	Ød	Øe	f
32		45	22,5	35	50	14	7,5
36.1		50	25	40	60	18	10
50.1		60	30	50	80	25	15
63.1		70	35	62	95	35	16,5
80.1		120	60	80	130	50	25
100.1		120	60	92	150	65	29
125.1		on request					
140							

Travelling nut with hole pattern EFM

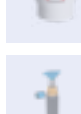
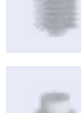
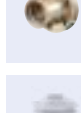
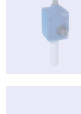


Range SHE							
Size	D1h9	D4	D5	D6	L	L1	L7
1.1	45	60	7	75	40	-	12
3.1	50	65	9	80	45	-	15
5.1	70	85	9	100	60	-	18
15.1	90	110	11	130	75	-	25
20.1	90	115	13,5	145	100	-	30
25	130	160	17,5	190	120	-	35

Range MERKUR M/SHG G							
Size	D1h9	D4	D5	D6	L	L1	L7
M 0	28	38	6	48	35	8	12
M 1	28	38	6	48	44	8	12
M 2	32	45	7	55	44	8	12
G 15	32	45	7	55	44	8	12
M 3	38	50	7	62	46	8	14
M 4/G 50	63	78	9	95	73	10	16
M 5/G 90	85	105	11	125	99	10	20

Range HSE							
Size	D1h9	D4	D5	D6	L	L1	L7
32	on request						
36.1	45	60	7	75	55	-	12
50.1	58	73	9	87	80	-	18
63.1	70	88	11	105	100	-	22
80.1	75	93	11	110	130	-	25
100.1	90	115	13,5	145	130	-	30
125.1	on request						
200.1							

A



B

C

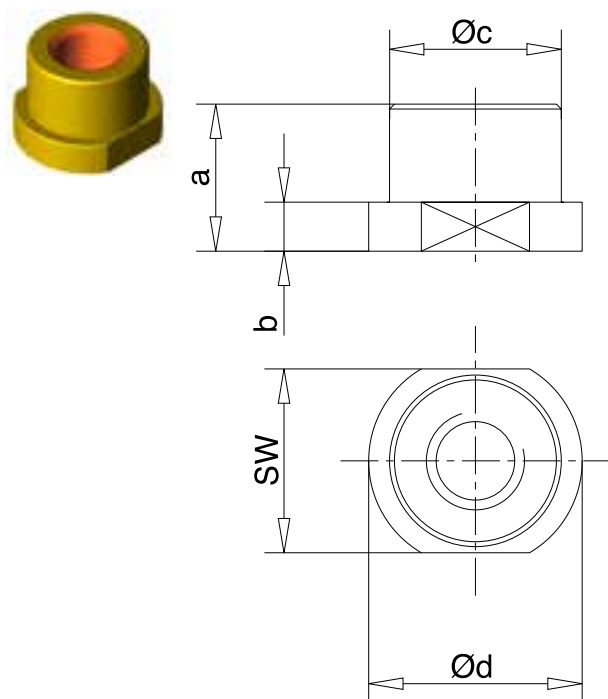
D

Special travelling nuts

Technical drawings and dimensions

A

Travelling nut with flat surface LSF



Other designs on request

Range SHE/MERKUR M

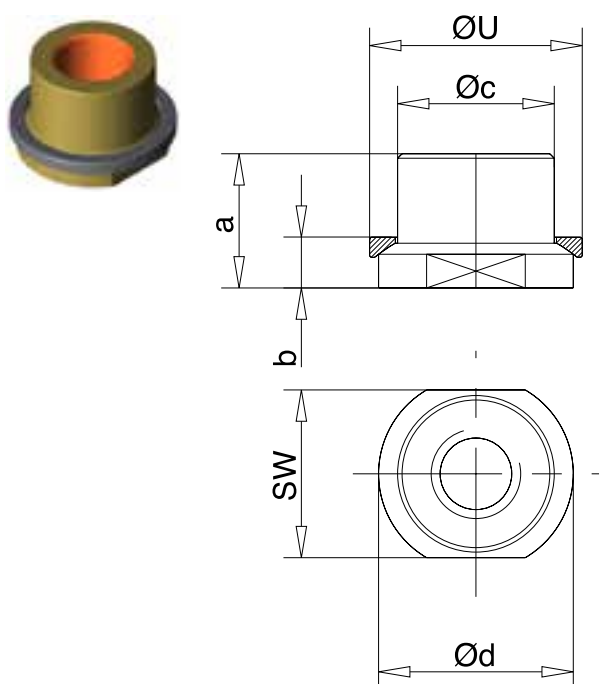
Size	a	b	Øc	Ød	SW
0,5 M 1	32	10	40	50	44
1.1 M 2	40	12	45	65	50
3.1 M 3	45	15	50	80	62
5.1 M 4	60	18	70	87	75
15.1 M 5	75	25	90	110	95
20.1 -	100	30	90	120	100
25 M 6	120	35	130	155	135
35 M 7	145	35	150	190	160
50.1 M 8	155	50	160	225	180

Range HSE

Size	a	b	Øc	Ød	SW
32	45	12	40	50	44
36.1	55	15	45	65	50
50.1	80	18	70	87	75
63.1	100	22	80	105	85
80.1	130	25	90	110	95
100.1	130	30	90	120	100
125.1	160	45	150	190	160

B

Travelling nut with spherical support LSA



Other designs on request

Range SHE/MERKUR M

Size	a	b	Øc	Ød	ØU	SW
0,5 -	32	10	40	50	55	44
1.1 -	40	12	45	65	65	50
3.1 M 3	45	15	50	80	82	62
5.1 M 4	60	18	70	87	95	75
15.1 -	75	25	90	110	120	95
20.1 -	100	30	90	120	120	100
25 M 6	120	35	130	155	175	135
35 M 7	145	35	150	190	195	160
50.1 M 8	155	50	160	225	220	180

Range HSE

Size	a	b	Øc	Ød	ØU	SW
32	45	12	40	50	55	44
36.1	55	15	45	65	65	50
50.1	80	18	70	87	95	75
63.1	100	22	80	105	110	85
80.1	130	25	90	110	120	95
100.1	130	30	90	120	120	100
125.1	160	45	150	190	195	160

C

D

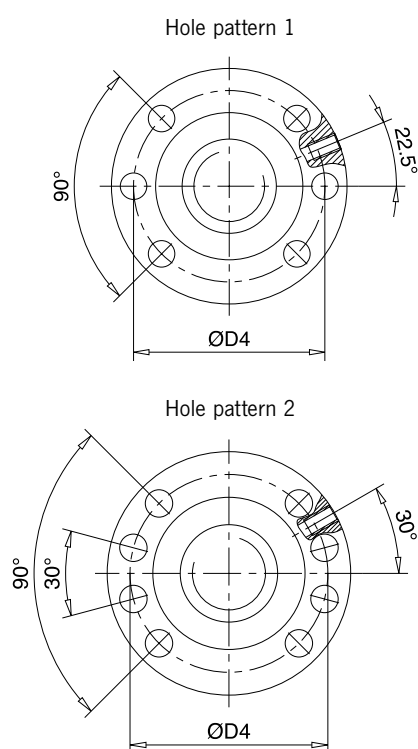
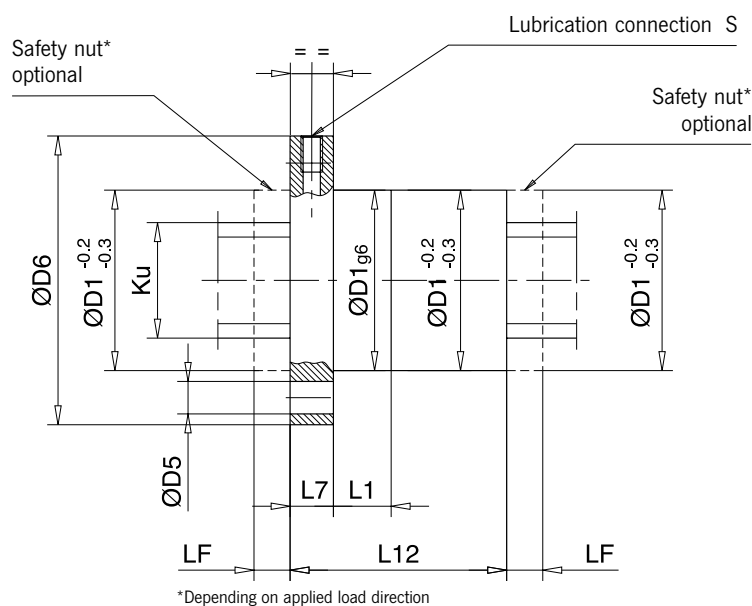
Special travelling nuts

Technical drawings and dimensions

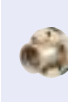
Single flange nut KGM for ball thread (Ku) – for all ranges

Size ball screw Ku		Load ratings		Nut dimensions									Safety nut	
d0 x P	Dw - i	C _{dyn} [kN]	C _{stat} [kN]	D1	D4	D5	D6	L1	L7	L12	S	Hole pattern	LF	
20x05-RH	3,5 - 4	22,7	42,6	36	47	6,6	58	10	10	43	M6	1	15	
20x10-RH	3,5 - 2	14	21,3	36	47	6,6	58	10	10	26	M6	1	20	
25x05-RH	3,5 - 4	24,2	54,8	40	51	6,6	62	10	10	43	M6	1	15	
25x10-RH	3,5 - 3	19,8	41,1	40	51	6,6	62	16	10	59	M6	1	20	
32x05-RH	3,5 - 5	30,8	91,4	50	65	9	80	10	12	50	M6	1	15	
32x10-RH	5 - 3	36,6	74,5	50	65	9	80	16	12	40	M6	1	25	
40x10-RH	7 - 4	79,2	170,5	63	78	9	93	16	14	76	M8x1	2	30	
40x20-RH	7 - 2	48,7	85,3	63	78	9	93	17	14	51	M8x1	2	50	
50x10-RH	7 - 6	112,1	328,8	75	93	11	110	16	16	101	M8x1	2	30	
50x20-RH	12,7 - 3	158	244,8	85	103	11	120	16	16	117	M8x1	2	50	
50x24-RH	12,7 - 3	158	244,8	85	103	11	120	18	16	92	M8x1	2	55	
63x10-RH	7 - 6	122,8	438,2	90	108	11	125	16	18	103	M8x1	2	30	
63x20-RH	12,7 - 3	173,5	333,2	95	115	13,5	135	25	20	121	M8x1	2	35	
80x10-RH	7 - 6	135	584,5	105	125	13,5	145	16	20	105	M8x1	2	30	
80x20-RH	12,7 - 5	282	800,7	125	145	13,5	165	25	25	170	M8x1	2	50	
100x10-RH	7 - 6	146,2	749,9	125	145	13,5	165	16	22	107	M8x1	2	30	
100x20-RH	12,7 - 6	336,6	1203,1	150	176	17,5	202	25	30	195	M8x1	2	60	
125x10-RH	7 - 6	157,9	952,6	150	170	13,5	190	25	25	110	M8x1	2	40	
125x24-RH	12,7 - 6	373,9	1622,2	170	196	17,5	222	25	40	235	M8x1	2	60	
160x20-RH	15 - 6	522	2476											

on request



A



B



C



D