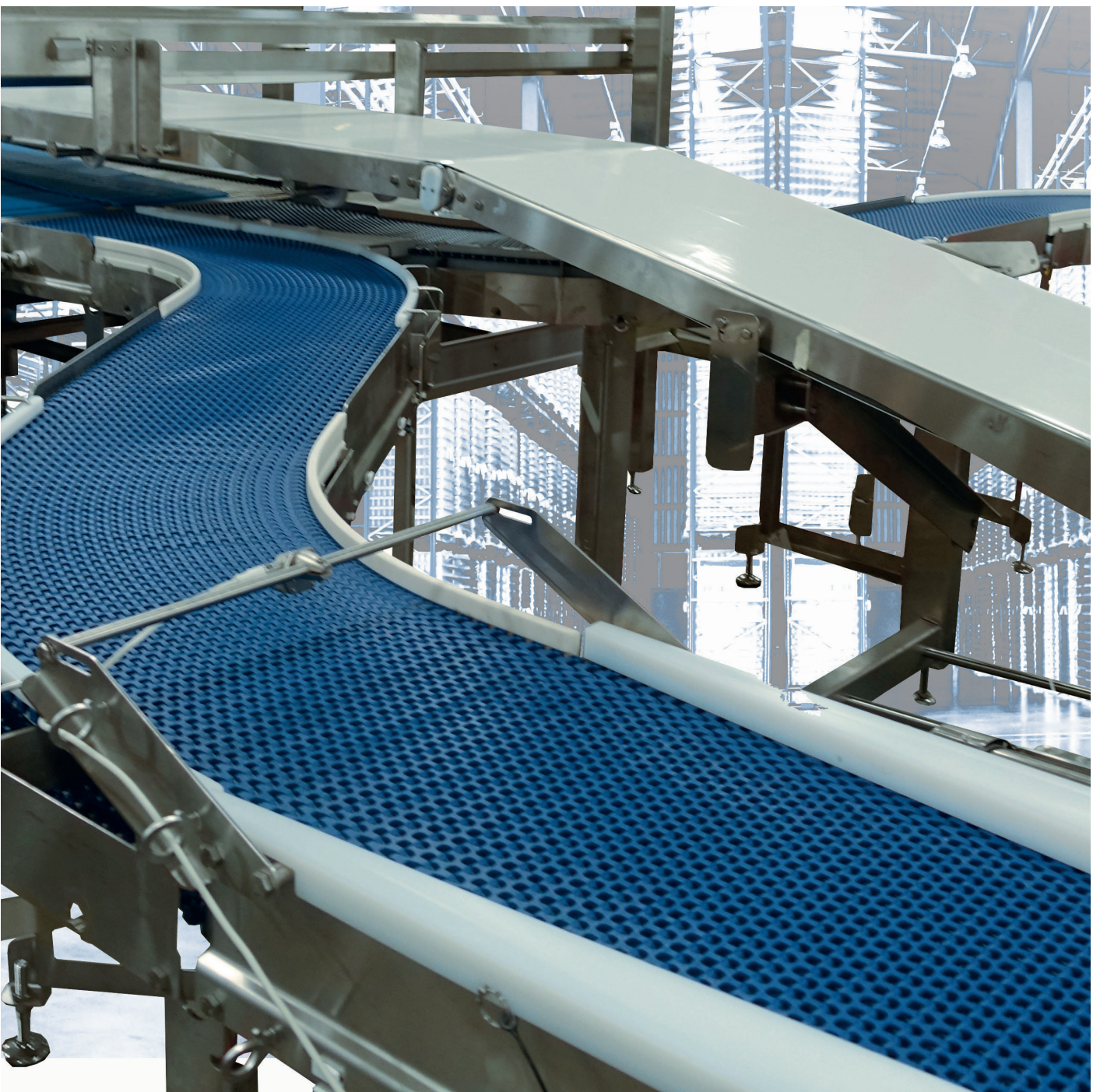


# PORTFOLIO

PRECISION CONVEYOR



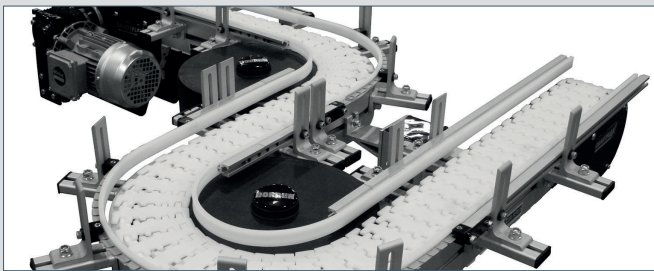
# DORNER

Founded in 1966 in Hartland, Wisconsin, Dorner is a global leader in the **design, application, manufacturing, and integration** of conveyor systems.

We are your partner in conveyor belts **with steel and aluminum frames for industry and stainless steel for the hygiene sector**. Our conveyors utilize different belts and modular chains that are flexible in function and design.

Companies from all over the world and from a wide range of industries turn to us to achieve greater **efficiency, productivity, and a better return on investment**.

## OUR DORNER PRODUCT HIGHLIGHTS:



### FLEXMOVE SERIES

FlexMove offers complete flexibility and customization to meet your specific application and can be configured to facilitate elevation changes, product rotations, and maneuvering around curves.

- Width: 45 - 260 mm
- Length: 0.6 - 30 m
- Load: up to 272 kg
- Belt speed: 76 mpm
- Customizable
- Compatible with all common flexible conveyor systems



### GAL-GES SERIES

With our GAL & GES series, we are your contact for Geppert systems and spare parts.

- Width: 50 - 600 mm
- Length: up to 18 meters
- Load: up to 30 kg
- Belt speed: 44 mpm
- Customizable
- Easy integration into existing production processes



### 2200 & 2700-SERIES

Dorner's characteristic low-profile conveyor belts offer a lean and powerful solution for conveying a wide range of industrial applications.

- Width: 44 - 914 mm
- Length: 457 - 7315 mm
- Load: up to 68 kg
- Belt speed: 122 mpm
- Lightweight aluminum frame



### AQUAGARD SERIES

The stainless steel conveyors in the AquaGard series meets high hygiene standards effortlessly to keep run time and throughput high.

- Width: 70 - 914 mm
- Load: up to 22.7 kg
- Wipeable



# PRECISION CONVEYORS

## OUR CONVEYOR SYSTEMS



### FLEXIBLE CHAIN CONVEYORS

For exceptionally flexible and customizable designs, FlexMove conveyor systems and components, crafted from aluminum and stainless steel, are the perfect choice.



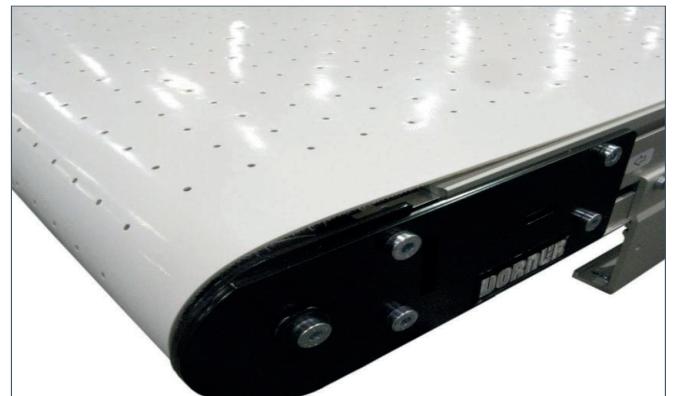
### SANITARY AND STAINLESS STEEL CONVEYORS

Our 7X Series conveyors - also known as AquaGuard and AquaPruf platforms - take food handling conveyors to a whole new level.



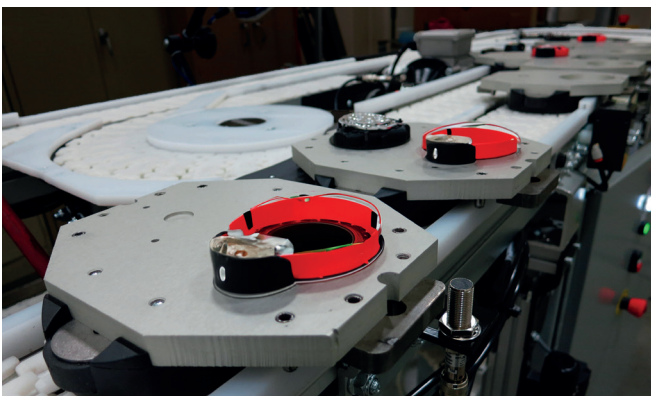
### FABRIC AND MODULAR BELT CONVEYORS

Our belt and plastic modular chain conveyors can be easily adapted to specific designs and assemblies. They are used for parts transportation with conveyor belt configurations such as straight, curved and ascending (Z-frame).



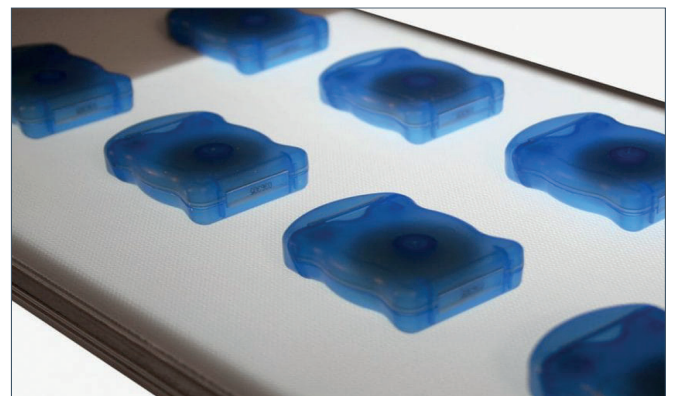
### VACUUM BELT CONVEYOR

When your products or components are small, lightweight and moving at a constant speed, you need a transfer solution that literally keeps things on track. Vacuum conveyors secure items of all sizes into place as they move up and down the belt.



### PALLET SYSTEMS

Dorner's pallet system conveyors simplify product flow and control with features such as the unique pin tracking system, industry-specific pallet sizes and innovative modules.

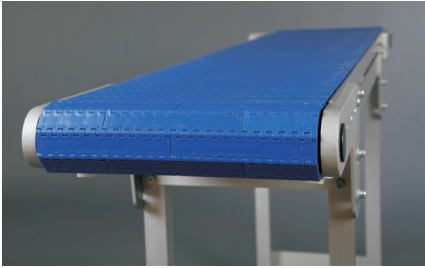


### BACKLIT CONVEYOR BELTS

Backlit conveyor belts for visual inspection and quality control. The lighting device is installed in the conveyor frame and emits light via a translucent conveyor belt.

# PRECISION CONVEYORS

## MANUFACTURER FOR ALMOST 60 YEARS



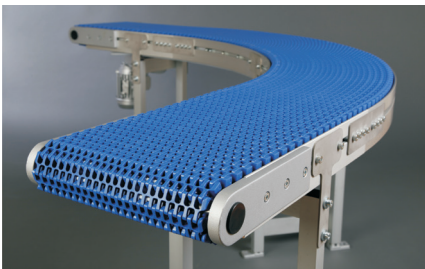
CONVEYOR BELTS WITH  
PLASTIC MODULAR CHAIN



FLAT TOP CONVEYORS



ARTICULATED CONVEYORS



CURVE CONVEYOR BELTS WITH  
PLASTIC MODULAR CHAIN



ACCESSORIES



INCLINE CONVEYORS



Z-CONVEYOR BELTS



EMEA & APAC Columbus McKinnon Industrial Products GmbH | Karl-Heinz-Beckurts-Straße 4 | 52428 Jülich  
Tel +49 2461 93767-0 | info.europe@dorner.com | www.dornerconveyors.com