



ZGZB-RU-PU Ratchet base

Manufactured from cut resistant polyurethane.
Can also be used as edge protector.

Technical data ZGZB-RU-PU

| Model | Art.-No. | For webbing width mm |
|---------------|-----------|-------------------------|
| ZGZB-RU-PU-50 | N39150001 | 35 - 50 |
| ZGZB-RU-PU-75 | N39150002 | 75 |

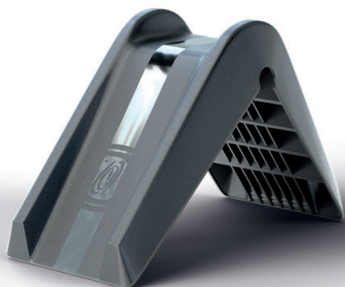


ZGZB-KS-PP-50 Edge protector

Edge protector for lashing sensitive loads
(cardboard boxes etc.).

Technical data ZGZB-KS-PP-50

| Model | Art.-No. | For webbing width mm |
|---------------|-----------|-------------------------|
| ZGZB-KS-PP-50 | N39160003 | 50 |



ZGZB-KS-PP-70 Edge protector

Inherently stable edge protection, protects both load and
ratchet lashing.

Leg lengths 135 x 170 mm.

Technical data ZGZB-KS-PP-70

| Model | Art.-No. | For webbing width mm |
|---------------|-----------|-------------------------|
| ZGZB-KS-PP-70 | 192020360 | up to 70 |