

Screwdriver Spindles pneumatic



NANOMAT Screwdrivers

The Screwdriver for your micro assemblies

straight design - torque from 8 Nmm - 300 Nmm (1.14 in.oz to 42.6 in.oz)

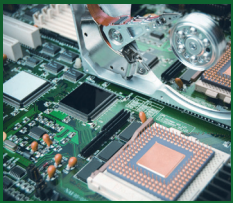
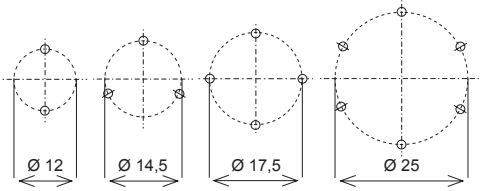
- top precision shut-off clutch
- for small spaces
- long-life, robust

The particular strength of a NANOMAT screwdriver in straight design is that it can carry out screw assemblies with torque ranges of 8 Nmm to 300 Nmm.

In these ranges you can not only assemble screws but also adjust them.



**Smallest possible
screwdriver spindle
spacing:**



NANOMAT Screwdrivers

The ergonomic NANOMAT screwdriver is extremely durable due to its extraordinary processing quality and design for heavy industrial use.

The NANOMAT spindles can be easily integrated and are extremely small. NANOMAT screwdrivers are available in right rotation, left rotation or reversible, with push to start or remote start option.

These tools can be used without lubrication: This should however only be done in specific applications. Using a tool without lubrication will decrease its lifespan. Torque accuracies of < 3% standard deviation and thus Cmk values of ≥ 1.67 with a tolerance of $\pm 15\%$ can be reached * with NANOMAT screwdrivers. Statistically speaking, the error rate is less than 0.6 per one million screw assemblies.

*) under suitable process conditions

ADVANTAGES

- **Accommodates standard bits type 4 mm Halfmoon**
The advantage is the use of standard bits.
- **Integrated Quick Change Chuck**
Bit change without the use of tools, quickly and easily.
- **Externally adjustable clutch mechanism**
The torque can be adjusted quickly and conveniently without the need for special tools.
- **High precision shut-off clutch**
The high precision torque control is based on the long standing DEPRAG principle of mechanical disengagement and motor shut-off.
- **Standardised ultra slim design**
Only 12 mm diameter for the tightest screw CL distance in your stationary application.
- **Standard overall length**
All gearing versions and models are available in a single length for ease of integration.
- **Proven DEPRAG guide bolt system**
Optimised end-load pressure on the screw, via adjustable spring force.

APPLICATIONS

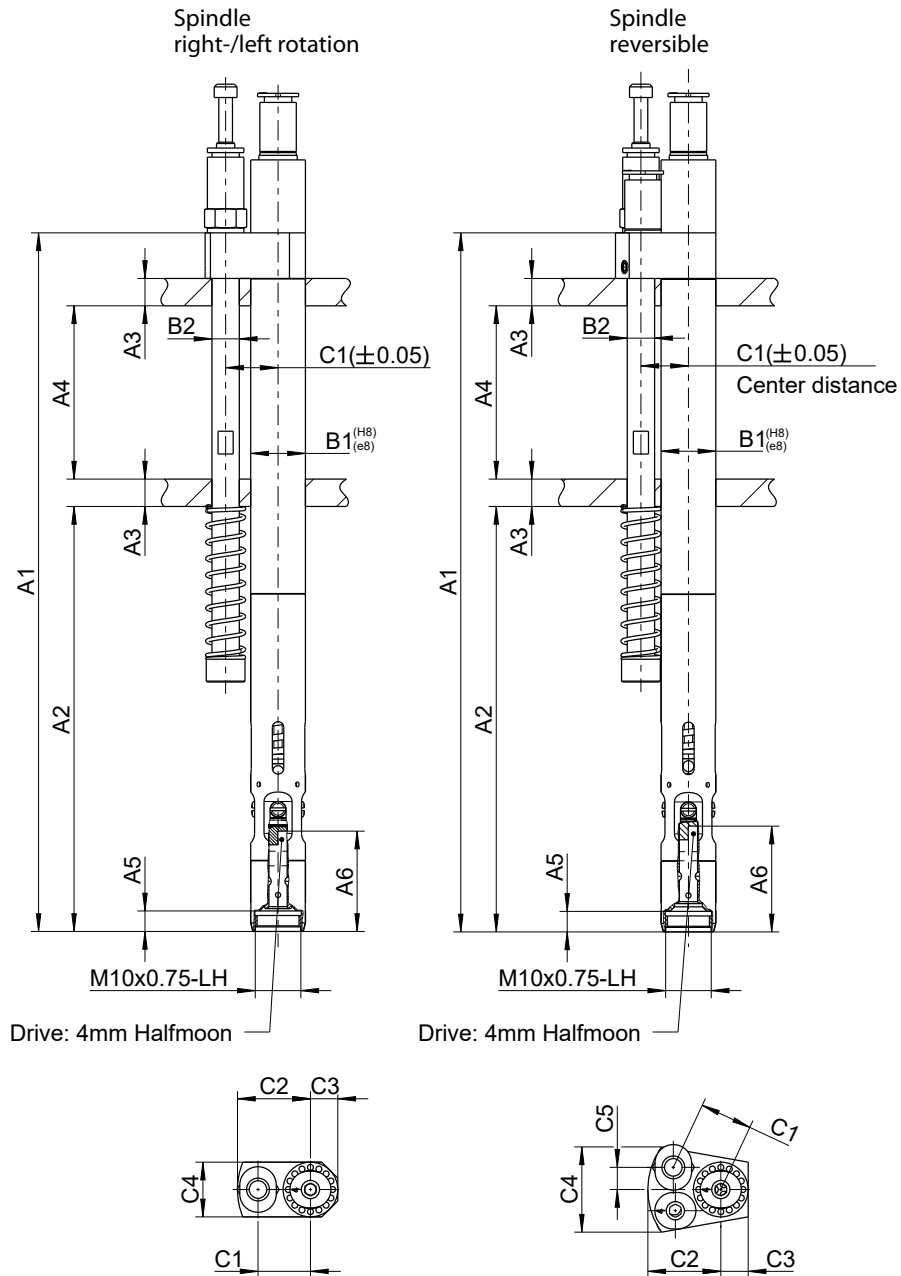
- Medical technology - assembly of hear-ing aids or cardiac pacemakers
- The watchmaking industry
- The optical industry - assembly of eye-glasses, lenses, photography equipment or microscopes
- Manufacture of small consumer electronic devices - Mobile phones, calculators, portable game consoles, Laptops and tablet PC's
- Precision engineering – gauges

TECHNICAL DATA

Screwdriver Style		Motor Size 00			
Spindle right rotation, right shut-off Push to Start	Type Part no.	345-3008-31-HM 500100A	345-5008-31-HM 500100B	345-6008-31-HM 500100C	345-7008-31-HM 500100D
Spindle left rotation, left shut-off Push to Start	Type Part no.	345-3008-31L-HM 500101A	345-5008-31L-HM 500101B	345-6008-31L-HM 500101C	345-7008-31L-HM 500101D
Spindle right rotation, right shut-off Remote Start	Type Part no.	345-3000-31-HM 500102A	345-5000-31-HM 500102B	345-6000-31-HM 500102C	345-7000-31-HM 500102D
Spindle left rotation, left shut-off Remote Start	Type Part no.	345-3000-31L-HM 500103A	345-5000-31L-HM 500103B	345-6000-31L-HM 500103C	345-7000-31L-HM 500103D
Torque min.	Ncm / in.oz	1 / 1.42	0.8 / 1.14	0.8 / 1.14	0.8 / 1.14
Torque max.	Ncm / in.oz	15 / 21.3	25 / 35.5	30 / 42.6	30 / 42.6
Speed, idling	rpm	1700	880	660	380
Air consumption	m ³ /min / cfm	0.1 / 3.5	0.1 / 3.5	0.1 / 3.5	0.1 / 3.5
Weight	kg / lbs	0.14 / 0.31	0.14 / 0.31	0.14 / 0.31	0.14 / 0.31
Push to Start pressure	N / lbs	3 / 0.67	3 / 0.67	3 / 0.67	3 / 0.67
Pressure at max. screwdriver stroke	N / lbs	20 / 4.48	20 / 4.48	20 / 4.48	20 / 4.48
Hose I.D. for air supply	mm / in.	2.5 / ³ / ₃₂	2.5 / ³ / ₃₂	2.5 / ³ / ₃₂	2.5 / ³ / ₃₂
Hose I.D. for function control	mm / in.	2.5 / ³ / ₃₂	2.5 / ³ / ₃₂	2.5 / ³ / ₃₂	2.5 / ³ / ₃₂
Bit drive with quick change chuck		4 mm Halfmoon	4 mm Halfmoon	4 mm Halfmoon	4 mm Halfmoon
Bits		4 mm Halfmoon	4 mm Halfmoon	4 mm Halfmoon	4 mm Halfmoon
Spindle reversible, right shut-off, Push To Start for right rotation reverse by Remote Start	Type Part no.	345-3008-31U-HM 500104A	345-5008-31U-HM 500104B	345-6008-31U-HM 500104C	345-7008-31U-HM 500104D
Spindle reversible, left shut-off, Push To Start for left rotation reverse by Remote Start	Type Part no.	345-3008-31UL-HM 500105A	345-5008-31UL-HM 500105B	345-6008-31UL-HM 500105C	345-7008-31UL-HM 500105D
Spindle reversible, right shut-off, Remote Start in drive direction and in reverse	Type Part no.	345-3000-31U-HM 500106A	345-5000-31U-HM 500106B	345-6000-31U-HM 500106C	345-7000-31U-HM 500106D
Spindle reversible, left shut-off, Remote Start in drive direction and in reverse	Type Part no.	345-3000-31UL-HM 500107A	345-5000-31UL-HM 500107B	345-6000-31UL-HM 500107C	345-7000-31UL-HM 500107D
Torque min.	Ncm / in.oz	1 / 1.42	0.8 / 1.14	0.8 / 1.14	0.8 / 1.14
Torque max.	Ncm / in.oz	15 / 21.3	25 / 35.5	30 / 42.6	30 / 42.6
Speed, idling	rpm	1400	680	500	300
Air consumption	m ³ /min / cfm	0.1 / 3.5	0.1 / 3.5	0.1 / 3.5	0.1 / 3.5
Weight	kg / lbs	0.15 / 0.33	0.15 / 0.33	0.15 / 0.33	0.15 / 0.33
Push to Start pressure	N / lbs	3 / 0.67	3 / 0.67	3 / 0.67	3 / 0.67
Pressure at max. screwdriver stroke	N / lbs	20 / 4.48	20 / 4.48	20 / 4.48	20 / 4.48
Hose I.D. for air supply	mm / in.	2.5 / ³ / ₃₂	2.5 / ³ / ₃₂	2.5 / ³ / ₃₂	2.5 / ³ / ₃₂
Hose I.D. for function control	mm / in.	2.5 / ³ / ₃₂	2.5 / ³ / ₃₂	2.5 / ³ / ₃₂	2.5 / ³ / ₃₂
Bit drive with quick change chuck		4 mm Halfmoon	4 mm Halfmoon	4 mm Halfmoon	4 mm Halfmoon
Bits		4 mm Halfmoon	4 mm Halfmoon	4 mm Halfmoon	4 mm Halfmoon
Included in delivery:	Nipple (mounted) · Torque adjustment tool · Assortment of clutch springs				

Performance data relate to an air pressure of 6.3 bar (90 PSI)

DIMENSION SHEET



212197

Motor Size 00

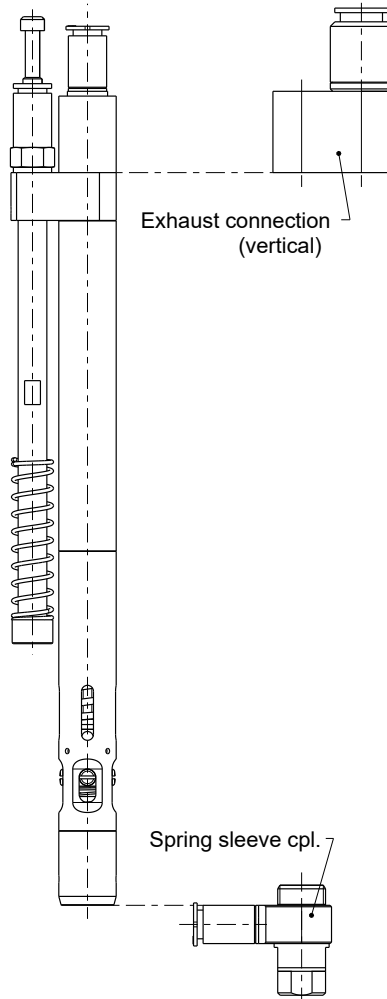
Type				Dimensions (mm)												
				A1	A2	A3	A4	A5	A6*	B1	B2	C1	C2	C3	C4	C5
Spindle right- / left rotation																
345-3008-31-HM	345-3008-31L-HM	345-3000-31-HM	345-3000-31L-HM													
345-5008-31-HM	345-5008-31L-HM	345-5000-31-HM	345-5000-31L-HM	153.2	93.2	6	38	4.5	(a)	12	∅ 6.2 + 0.1 / ∅ 6 h9	11.5	16	6	12	-
345-6008-31-HM	345-6008-31L-HM	345-6000-31-HM	345-6000-31L-HM						(b)							
345-7008-31-HM	345-7008-31L-HM	345-7000-31-HM	345-7000-31L-HM						(a)							
									(b)							
Spindle reversible																
345-3008-31U-HM	345-3008-31UL-HM	345-3000-31U-HM	345-3000-31UL-HM						(a)							
345-5008-31U-HM	345-5008-31UL-HM	345-5000-31U-HM	345-5000-31UL-HM	153.3	93.3	6	38	4.5	(b)	12	∅ 6.2 + 0.1 / ∅ 6 h9	11.5	16	6	18.7	4.9
345-6008-31U-HM	345-6008-31UL-HM	345-6000-31U-HM	345-6000-31UL-HM						(a)							
345-7008-31U-HM	345-7008-31UL-HM	345-7000-31U-HM	345-7000-31UL-HM						(b)							

A6*: (a): 22 mm (+ 1.5 mm stroke for push to start)

(b): 23.5 mm

Optional accessories

Spring sleeve cpl., with vacuum connection (Custom screw finder sleeve and bit combinations upon request. Vacuum screw holding accessories available.)	Part no.	203860B
Exhaust connection vertical, turnable	Part no.	386924L



163491

DEPRAG

DEPRAG SCHULZ GMBH u. CO. KG

P.O. Box 1352 | D-92203 Amberg

Carl-Schulz-Platz 1 | D-92224 Amberg

Phone: +49 9621 371-0 | Fax: +49 9621 371-120

www.deprag.com | info@deprag.de

CERTIFIED AS PER DIN EN ISO 9001
