

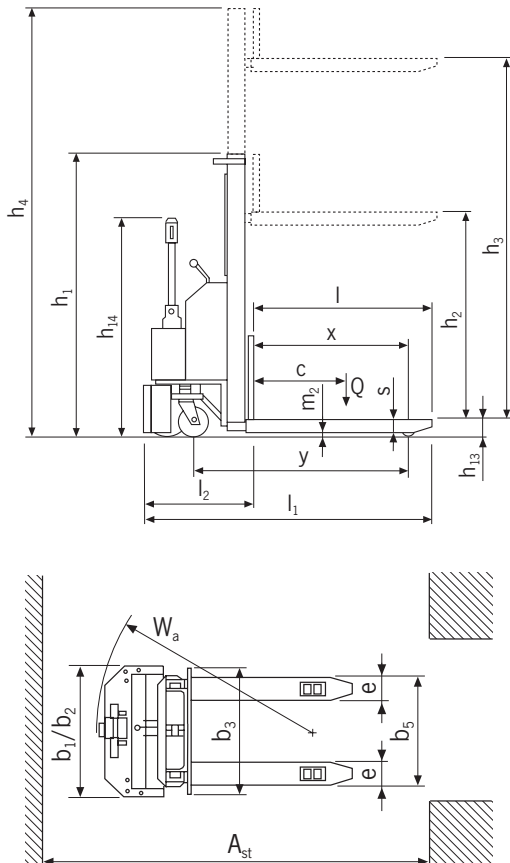
## EGV PSL 1016 II Electric pedestrian stacker

Capacity 1000 kg,  
Fork height max. 1600 mm

The EGV PSL 1016 II is the ideal solution for indoor transportation and of palletised goods within a warehouse environment for short haul and medium work load applications.

### Features

- The slim single mast and the laterally, ergonomic tiller ensure a free view onto the goods as in front of the stacker.
- The fork thickness of 60 mm enables an easier entrance inside pallets, while working in elevation.
- Easy maintenance – the convenient access opening at the bottom of the forklift allows an immediate disassembly of motor wheel without lifting the machine.
- The reduced overall width of 794 mm improves the handling of goods in narrow spaces and corridors.
- Ultra-slow drive function enables exact driving in very tight spaces.
- Gel battery as standard.



### Technical data EGV PSL 1016 II

Model	EGV PSL 1016 II
Art.-No.	192021784
Capacity (up to 2.5 m lift), kg	1000
Steering rollers, mm	186 x 50 + 125 x 45
Load rollers, mm	82 x 70
Height, mast retracted h1, mm	1970
Freelift h2, mm	1510
Stroke, mm	1510
Height, mast extended h4, mm	1970
Fork height max. h3, mm	1600
Fork height lowered h13, mm	90
Overall length L1, mm	1675
Overall width b1/b2, mm	794
Fork height s, mm	60
Fork width e, mm	150
Fork length l, mm	1153
Outside dimension of forks b5, mm	560
Travel speed with/without load, km/h	3.7/4.3
Lifting speed with/without load, m/s	0.11/0.18
Lowering speed with/without load, m/s	0.18/0.18
Drive motor rating, kW	0.35
Hoist motor rating, kW	2.2
Battery	Gel
Battery charger, V/A	24/12
Battery voltage, V/Ah	24/50