



LF-1

LF-2

## LF Load moving skates and systems with fixed wheels

### Capacity 1 - 6t

The components of the load moving skates can be universally combined and are ideal for the transport of medium heavy loads of all kinds.

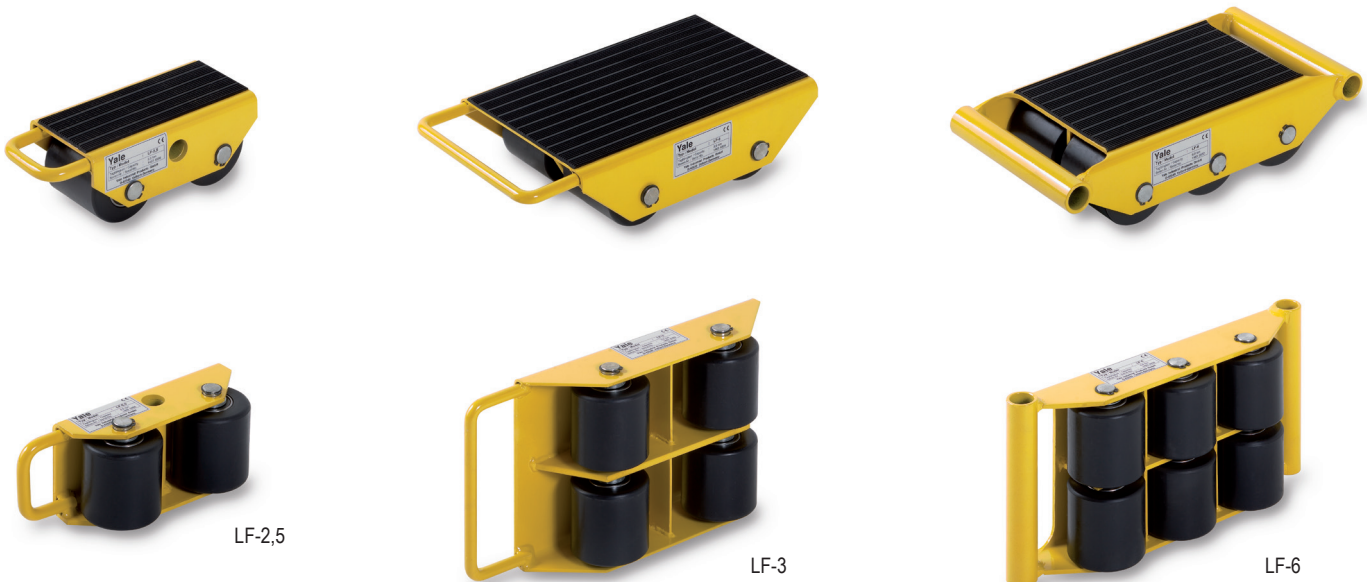
The components can be used individually or adapted to a load moving system. The units are maintenance-free.

### Features

- Solid forged steel construction.
- Anti-slip rubber lining.
- Abrasion-resistant nylon wheels.
- Models LF-2,5 and above are provided with two enclosed ball bearings per wheel.

### Technical data LF

| Model  | Art.-No.  | Capacity<br>t | Wheels | Number<br>of rollers | Wheels<br>diameter x width<br>mm | Dimensions<br>L x W x H<br>mm | Weight<br>kg |
|--------|-----------|---------------|--------|----------------------|----------------------------------|-------------------------------|--------------|
| LF-1   | N13600006 | 1.0           | fixed  | 4                    | 100 x 35                         | 400 x 228 x 120               | 7.0          |
| LF-2   | N13600007 | 2.0           | fixed  | 8                    | 100 x 35                         | 400 x 228 x 120               | 8.0          |
| LF-2,5 | N13600008 | 2.5           | fixed  | 2                    | 85 x 90                          | 275 x 120 x 100               | 4.0          |
| LF-3   | N13600009 | 3.0           | fixed  | 4                    | 85 x 85                          | 400 x 228 x 100               | 9.5          |
| LF-6   | N13600010 | 6.0           | fixed  | 6                    | 85 x 85                          | 415 x 210 x 100               | 12.0         |



LF-2,5

LF-3

LF-6