

VHM Throttle-/Shut-off valves

700 bar

These valves are used to shut-off hydraulic lines especially in multiple cylinder systems. The needle valve VHM-1 also allows to throttle an oil flow especially in connection with lifting applications.



VHM-1-E



VHM-2

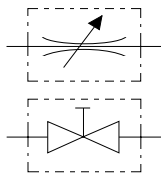
Technical data VHM

Model	Art.-No.	Operating pressure max. bar	Control	Oil ports both ends	Width mm	Weight kg
VHM-1-E	N14101313	700	Needle	3/8-NPT inner	4	0.7
VHM-2	N14100344	700	Ball	3/8-NPT inner	6	0.9

Dimensions VHM

Model	VHM-1-E	VHM-2
Length, mm	70	75
Width, mm	30	45
Height, mm	80	75

Hydraulic symbol



VPS Pressure switch

Adjustable between 100 - 800 bar

As soon as the pressure has reached the set value, a micro-switch (altering contact) is activated.

This signal can be used:

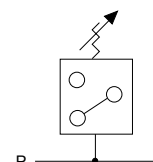
- For automatic pressure limiting.
- To report a certain pressure value.
- As an automatic motor on/off switch with pressure guard power packs.



Technical data VPS

Model	Art.-No.	Control range bar	Electric data	Oil ports	Difference of switch point bar	Repeat accuracy bar	Weight kg
VPS-1	N14100639	100 - 800	5 A/250 V	3/8 NPT	25 - 70	10	0.5

Hydraulic symbol



Dimensions VPS

Model	VPS-1
Height x Width, mm	130 x 85

As soon as the pressure has reached the set value, a micro-switch (alternating contact) is activated. Should the pressure drop, the micro-switch starts the pump again in order to rebuild the pressure.