

VEP Directional valves

Solenoid incl. pressure set valve, 700 bar

Solenoid operated valves are used to control the connected hydraulic cylinder by means of a pendant remote control or further electrical controls like pressure switches or limit switches.

Control principle

All solenoid valves have 3 positions:

- advance - hold - return -

In neutral position (- hold -) the valves switch to "pressureless circuit" so that the oil flow is guided back to the reservoir while the connected cylinder is safely held under pressure.

Normally, solenoid valves are mounted directly onto power packs but can also be connected by using hydraulic piping.

Design

Long-life, direct-control ball seal valves with leak-free "load hold function" in neutral position.

The solenoids guarantee a very quick reaction of the valves so that cylinders can be controlled millimeterwise.

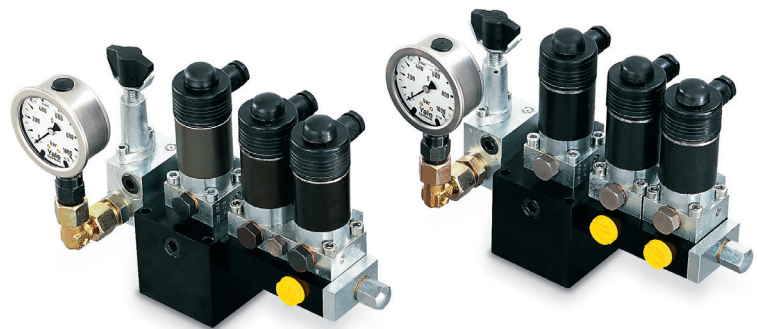
The valves are suitable for continuous operation (100 % on/off duration).

Modular design

The modular principle allows special valve configurations e.g. control of multiple cylinder systems or specific control sequences.

Pressure adjustment

All solenoid valves are equipped with a precision-adjustable pressure set valve which allows the system pressure (force of cylinder) to be limited to any value from 0 to 700 bar.



VEP-3/3-1

VEP-4/3-1

Pressure gauge

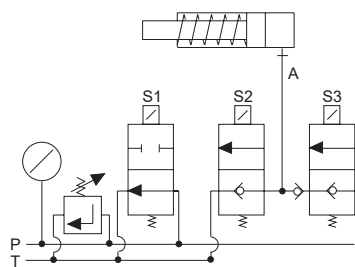
A glycerine-damped pressure gauge GGY-631 is standard with solenoid valves, 0 - 1000 bar, Ø 63 mm.

Mounting flange

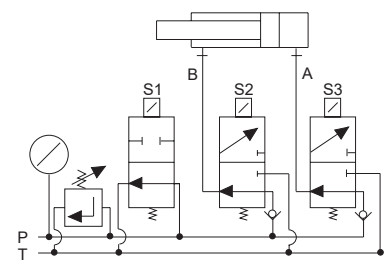
The valve flanges are designed in a way that valves (with pressure connector) can easily be mounted onto power packs.

Optional

The connector model FY-905 is to be ordered separately.



VEP-3/3-1 and VEP-3/3-2 for single-acting cylinders



VEP-4/3-1 and VEP-4/3-2 for double-acting cylinders

INFO

If oil ports A and B should have 3/8 NPT the adaptor model FY-30 is to be ordered separately.

Technical data VEP

Model	Art.-No.	Control	For cylinders	Operating pressure max. bar	Size	Oil flow max. l/min	Control voltage	Oil ports P T	Pressure relief valve	Weight kg
VEP-3/3-1	N14100404	3/3-way	single-acting	700	1	12	24 V =	3/8 NPT	yes	4.1
VEP-3/3-2	N14100405	3/3-way	single-acting	700	2	25	24 V =	3/8 NPT	yes	7.9
VEP-4/3-1	N14100403	4/3-way	double-acting	700	1	12	24 V =	3/8 NPT	yes	4.1
VEP-4/3-2	N14100406	4/3-way	double-acting	700	2	25	24 V =	3/8 NPT	yes	7.9