

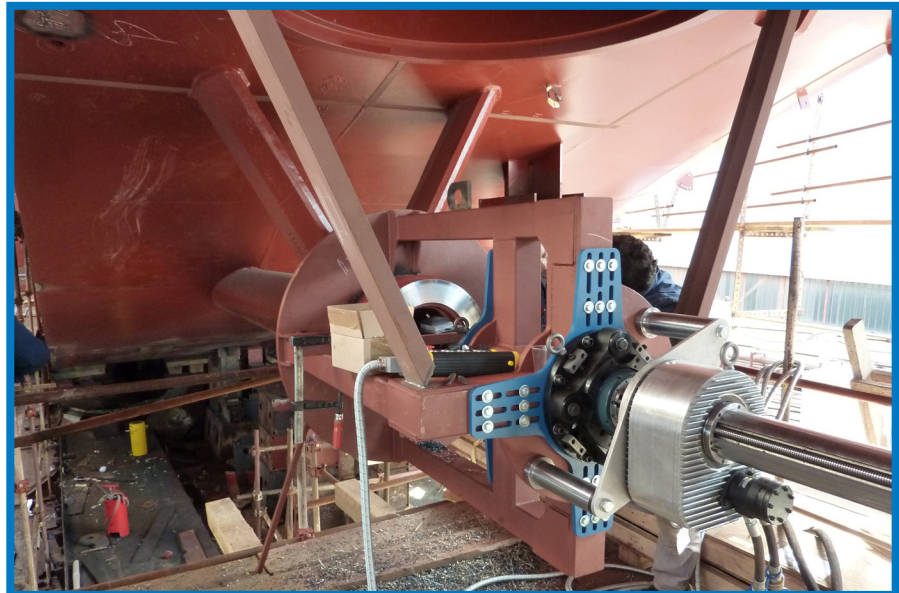
Packing big boring capability into a compact, modular machine, maximizing efficiency and minimizing downtime.

Powerful Yet Compact

- Take the power of a stationary machine to the job site to solve tough machining challenges in record time.
- Using 11.3 in³ (185 cm³) Hydraulic motor, produces 2280 ft-lbs (3090 N•m) of torque at the bar, at 29 rpm.
- Compact, modular components, many which can be lifted by hand, allow fast, easy setup, maximizing efficiencies, and minimizing downtime.

Versatile and Flexible

- Huge machining range bores from 10.25 - 58.25 inches (260.4 - 1479.6 mm) in diameter, and faces from 9.6 - 61.9 inches (243.8 - 1572.3 mm).
- ID and End mount bearings feature spherical taper-lock roller bearings.
- End mount can be fine adjusted by +/- 0.625 inches (15.9 mm) to center the bar.
- Optional dual action boring/facing arms increase facing range, and allow for both boring and facing without switching equipment. Full-length square ways on boring/facing arms allow for quick positioning anywhere along the arm. Attaches to the net fit tool carrier by compression-clamping, to provide maximum tool stability.
- Machine is highly adjustable. The tool carrier, half nut, alignment of boring/facing arm, and tool carriage can each be adjusted to maximize machining performance.
- With leading & trailing boring head configuration, 2 boring heads can be used simultaneously.
- For even greater facing range and longer continuous stroke, the new boring/facing arms are available. Setup is quick & easy, featuring industry standard quick-change



tooling for both boring and facing operations.

- Highly versatile tool holder block accepts industry standard tooling with a nominal 0.5, 0.75, or 1 inch (12.7, 19.1, or 25.4 mm) square shank.
- Tool post on the boring/facing arm can be rotated to provide maximum flexibility in machining setup (including some cantilevered configurations).
- Net fit tool carrier can be clamped to bar for facing operations. For boring operations, carrier can be adjusted to remove clearance between carrier and the bar. This flexibility also ensures maximum rigidity for either operation
- Net fit tool carrier designed with a split frame to simplify installation on the boring bar. It can be configured to use either the boring head set for boring or facing, or the new boring/facing arm assembly.

High Quality Design

- Features a uniquely-designed modular tool carrier which provides a new level of strength and rigidity by channeling machining forces directly to the boring bar through strategically-located adjustable guide shoes.
- Chromed bars, straight to within 0.001 inch per foot (0.0254 per 304.8 mm)
- Gun-drilled bars with optical targets available.
- Adjustable, removable half nut increases net fit tool carrier flexibility. Easy removal of tool carrier allows for machining of multiple bores.
- Backlash adjustment nut allows in-the-field adjustment to eliminate backlash in the tool carrier, and extend the life of the machine.

SPECIFICATIONS

	US	Metric
Boring and Facing Ranges:		
Boring diameter range, standard stack block assembly:	10.25 - 58.25 inches	260.4 - 1479.6 mm
Boring diameter range, boring/facing arm assembly:		
with 18 inch (457.2 mm) boring/facing arm	22.1 - 29.9 inches	561.3 - 759.5 mm
with 23 inch (584.2 mm) boring/facing arm	25.1 - 39.9 inches	637.5 - 1013.5 mm
with 34 inch (863.6 mm) boring/facing arm	35.9 - 61.9 inches	911.9 - 1572.6 mm
Facing diameter range, mechanical facing head assembly:	12.0 - 57.5 inches	304.8 - 1460.5 mm
Facing diameter range, boring/facing arm assembly:		
with 18 inch (457.2 mm) boring/facing arm	17.8 - 29.9 inches	452.1 - 759.5 mm
with 23 inch (584.2 mm) boring/facing arm	17.8 - 39.9 inches	452.1 - 1013.5 mm
with 34 inch (863.6 mm) boring/facing arm	17.8 - 61.9 inches	452.1 - 1572.6 mm
Facing diameter range, boring/facing arm assembly (tool post reversed):		
("tool post reversed" refers to rotating the tool post so that the tool is on the bar side of the tool post.)		
with 18 inch (457.2 mm) boring/facing arm	9.6 - 19.8 inches	243.8 - 502.92 mm
with 23 inch (584.2 mm) boring/facing arm	9.6 - 29.8 inches	243.8 - 756.9 mm
with 34 inch (863.6 mm) boring/facing arm	9.6 - 51.8 inches	243.8 - 1315.7 mm
Performance Data		
Rotational Drive Unit (RDU) Gear Ratio:	10.59:1 gear reduction	
Hydraulic motor size affects torque and speed		
Theoretical values calculated using a 25 Hp hydraulic power unit producing 2000 psi (13790 kPa) continuous, [normal operation is 1200 psi (8270 kPa)] and pumping 15 gpm (68 l/min).		
Hydraulic motor size range:	3.6 - 17.9 in ³	59.9 - 293.3 cm ³
Boring Bar Torque:	750 - 2900 ft•lb	1020 - 3930 N•m
Max boring rpm:	90 - 18 rpm	90 - 18 rpm
For example, with 11.3 in ³ (185.3 cm ³) hydraulic motor (43457):		
Boring Bar Torque:	2280 ft•lb	3090 N•m
Max boring rpm:	29 rpm	29 rpm
Feed rate of mechanical Axial Feed Unit (AFU):	0.003 - 0.025 in/rev.	0.076 - 0.635 mm/rev.
Feed rate of electric Axial Feed Unit (AFU):	0 - 0.48 in/min.	0 - 12.2 mm/min.
Measures:		
Operating weight (estimated)	2012.3 lbs.	912.8 kg
Typical machine consisting of Rotational Drive Unit (RDU), Axial Feed Unit (AFU), boring head set, tool carrier, 2 bearing mounts, 12 foot (365.8 cm) bar, tool kit, and hydraulic motor.		
Shipping weight (estimated), for machine (metal crate)	2203 lbs.	999.3 kg
Shipping weight (estimated), for machine (wood crate)	2117.3 lbs.	960.4 kg
(machine with RDU, AFU, boring head set, tool carrier, tool kit, and hydraulic motor.)		
Shipping weight (estimated), set of 2 Bearings	780 lbs.	353.8 kg
Shipping weight (estimated), Boring Bar	5.9 lbs/inch	1.05 kg/cm
Shipping weight (estimated), 15 Hp Hydraulic Power Unit	750 lbs	340.2 kg
Shipping weight (estimated), 25 Hp Hydraulic Power Unit	875 lbs	396.9 kg
Shipping dimensions:		
Machine, in wood crate, W, D, H	24 x 37 x 20-5/8 inches	609.6 x 939.8 x 523.9 mm
Machine, in steel crate, W, D, H	43.3 x 29.5 x 22.5 inches	1099.8 x 749.3 x 571.5 mm
Bearing (each bearing shipped separately) W, D, H	36.5 x 36.5 x 17 inches	927 x 927 x 432 mm
12 foot (365.8 cm) bar W, D, H	15 x 14 x 158 inches	381 x 356 x 4013 mm
15 or 25 Hp Hydraulic Power Unit W, D, H	24 x 43 x 47 inches	610 x 1092 x 1194 mm

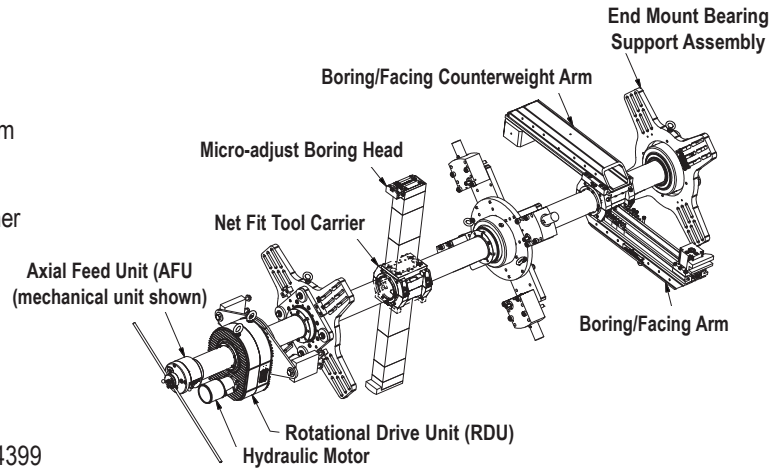
All dimensions should be considered reference. Contact your CLIMAX Representative for precision dimensions. Specifications are subject to change without notice. There are no systems or components on this machine that are capable of producing hazardous EMC, UV or other radiation hazards. The machine does not use lasers nor does it create hazardous materials such as gasses or dust.

TOOL CONFIGURATIONS

To configure your BB7100 Boring Machine:

1. Select a Base Unit
2. Select an Axial Feed Assembly
3. Select Bearing Assemblies
4. Select a Boring Bar
5. Select Boring Diameter Ranges
6. Select Boring Heads
7. Select a Boring/Facing Arm Assembly
8. Select a Hydraulic Motor
9. Select a Shipping Container

To configure the boring machine you require, simply select the option you need in each step, then contact your CLIMAX representative.



1. Base Unit

Rotational drive unit, tool carrier assembly, tool kit, and instruction manual 54399

2. Axial Feed Assembly

Mechanical axial feed assembly 42407
 Electrical axial feed assembly, 120V 43736
 Electrical axial feed assembly, 230V 41563

3. Bearing Assemblies (Multiple units may be ordered)

Spider assembly end bearing support up to 34.5 inch (876.3 mm) diameter 53711
 Spider assy end bearing support with extension up to 60 inch (1524.0 mm) diameter 54969
 ID Bearing mount assembly, jack bolt, for ID diameter of 19 - 46 inches (482.6 - 1168.4 mm) 54305
 ID Bearing mount assembly, face adjust, for ID diameter of 19 - 46 inches (482.6 - 1168.4 mm) 54302
 ID Bearing mount assembly, jack bolt, for ID diameter of 19 - 72 inches (482.6 - 1828.8 mm) 54311
 ID Bearing mount assembly, face adjust, for ID diameter of 19 - 72 inches (482.6 - 1828.8 mm) 54310

4. Boring Bar, 5-inch (127 mm) diameter (Multiple units may be ordered)

Boring bar assembly, 8 ft (243.8 cm) 45211
 Boring bar assembly, 10 ft (304.8 cm) 45039
 Boring bar assembly, 12 ft (365.8 cm) 45036
 Boring bar assembly, 14 ft (426.7 cm) 45037
 Boring bar assembly, 16 ft (487.7 cm) 45038
 Boring bar assembly, 18 ft (548.6 cm) 45287
 Boring bar assembly, 20 ft (609.6 cm) 44814

Gun-drilled bars with optical targets:

Boring bar assembly, with optics, 8 ft (243.8 cm) 54579
 Boring bar assembly, with optics, 10 ft (304.8 cm) 42317
 Boring bar assembly, with optics, 12 ft (365.8 cm) 54580
 Boring bar assembly, with optics, 14 ft (426.7 cm) 54581
 Boring bar assembly, with optics, 16 ft (487.7 cm) 54582
 Boring bar assembly, with optics, 18 ft (548.6 cm) 54583
 Boring bar assembly, with optics, 20 ft (609.6 cm) 54584

5. Boring Diameter Ranges (select tooling in next step)

Stack up blocks, boring diameter range 10.25 - 26.25 inches (260.4 - 666.8 mm) 81251
 Stack up blocks, boring diameter range 10.25 - 58.25 inches (260.4 - 1479.6 mm) 81252

6. Boring Heads

Micro adjust boring head 3/4 inch (19.1 mm) tooling (1/2 inch (12.7 mm) ready). Multiple units may be ordered for leading & trailing 79020
 Micro adjust boring head 1 inch (25.4 mm) tooling 79021
 Solid tooling boring head, leading & trailing 81246

7. Boring /Facing Arm Assembly - For use with boring head set (Additional arms may be purchased separately)

Mechanical facing head assy, 4 inch (101.6 mm) 22680
 Mechanical facing head assy, 6 inch (152.4 mm) 49753
 Mechanical facing head assy, 8 inch (203.2 mm) 49754
 Boring/facing arm assembly, 18 inch (457.2 mm) 54258
 Boring/facing arm assembly, 23 inch (584.2 mm) 54259
 Boring/facing arm assembly, 34 inch (863.6 mm) 54260

8. Hydraulic Motor Assembly

Motor Capacity		Max Bar RPM at (Intermittent operation only)				Torque at bar Calculated ft-lbs, (N•m)	Part No. Motors with 60 Series QD Fittings	Part No. Motors with ISO 16028 QD Fittings
		RDU Gear Ratio = 10.59:1						
In ³	cm ³	8.3 gpm* (31.5 L/min) with 50 Hz mains power	10 gpm* (37.9 L/min) with 60 Hz mains power	15 gpm* (56.8 L/min) maximum continuous	20 gpm* (75.7 L/min) maximum intermittent			
3.6	59	48	58	87	116	621 (842)	43453	84230
5.9	96.7	29	35	53	71	1060 (1437)	43454	84321
7.3	119.6	24	29	43	57	1317 (1786)	43455	84232
8.9	145.8	19	23	35	47	1282 (1738)	43456	84233
11.3	185.2	15	18	28	37	1815 (2461)	43457	84234
14.1	231.1	12	15	22	30	2068 (2804)	43458	84235
17.9	293.3	10	12	17	23	2410 (3268)	43459	84236

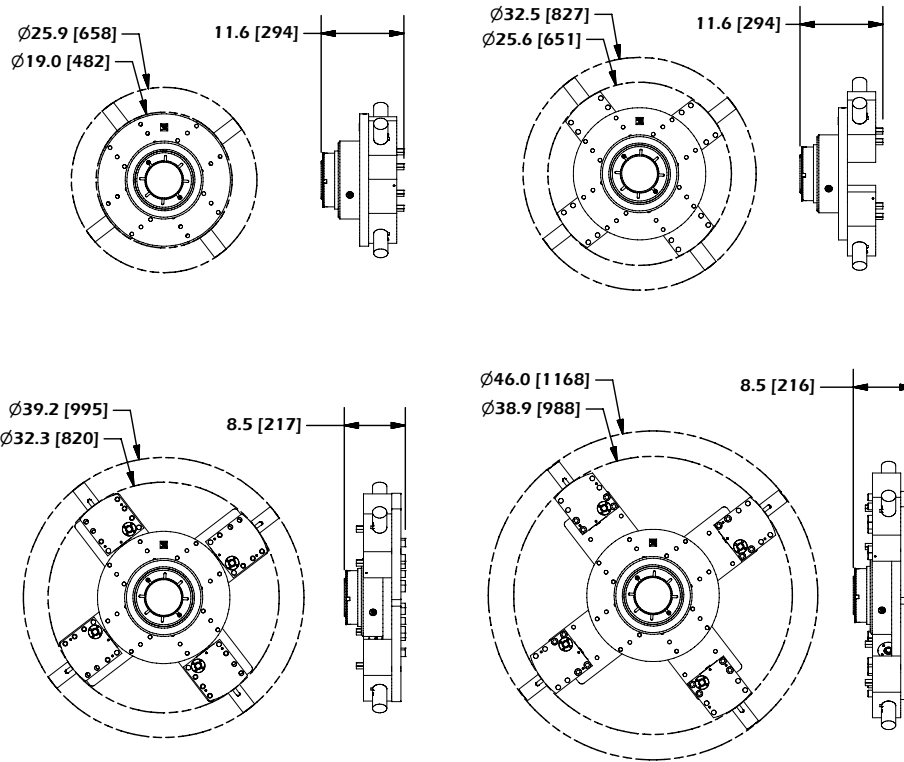
9. Shipping Container

Plywood hinged crate, 24 x 37 x 20-5/8 inches (609.6 x 939.8 x 523.9 mm) 28560
 Metal shipping container 43.3 x 29.5 x 22.5 inches (1099.8 x 749.3 x 571.5 mm) 54352
Machine components only.
 Bars and bearings available in wood only.

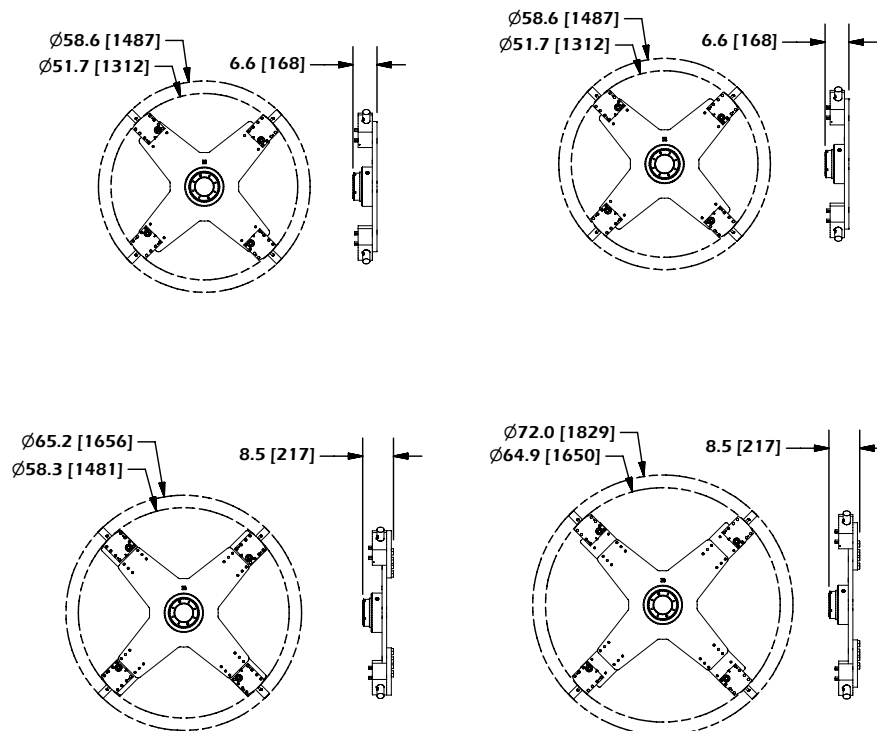
OPERATIONAL DIMENSIONS

Dimensions in Inch (mm)

20 - 46 inch (508.0 - 1168.4 mm) ID Mount (Face Adjust shown. Jack screw adjust ranges are the same)



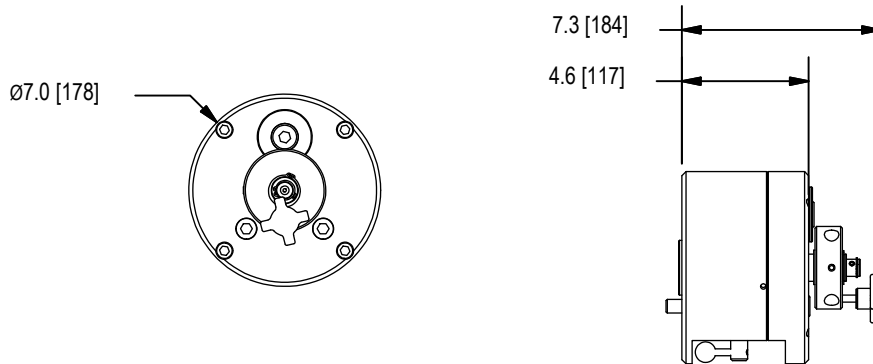
46 - 72 inch (1168.4 - 1828.8 mm) ID Mount (Face Adjust shown. Jack screw adjust ranges are the same)



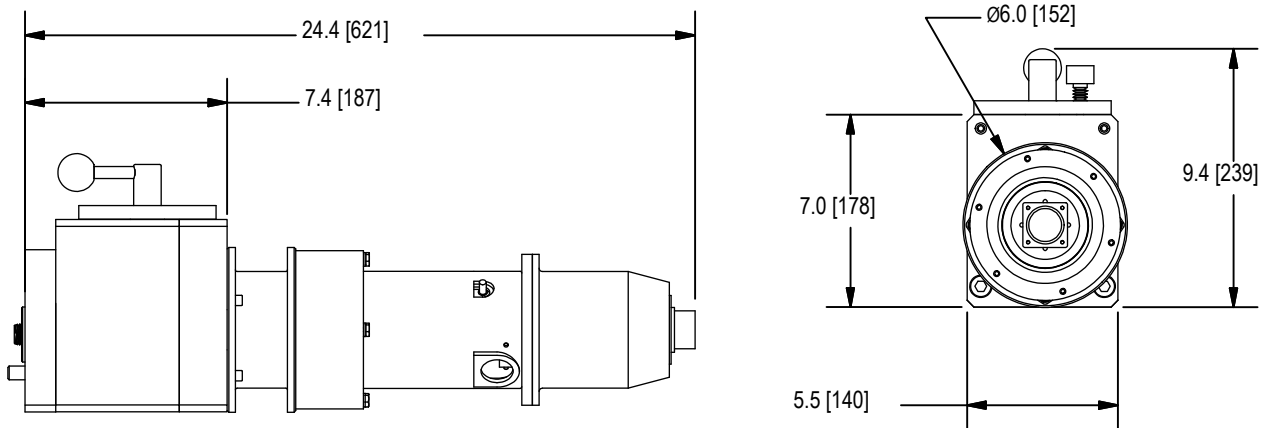
OPERATIONAL DIMENSIONS

Dimensions in Inch (mm)

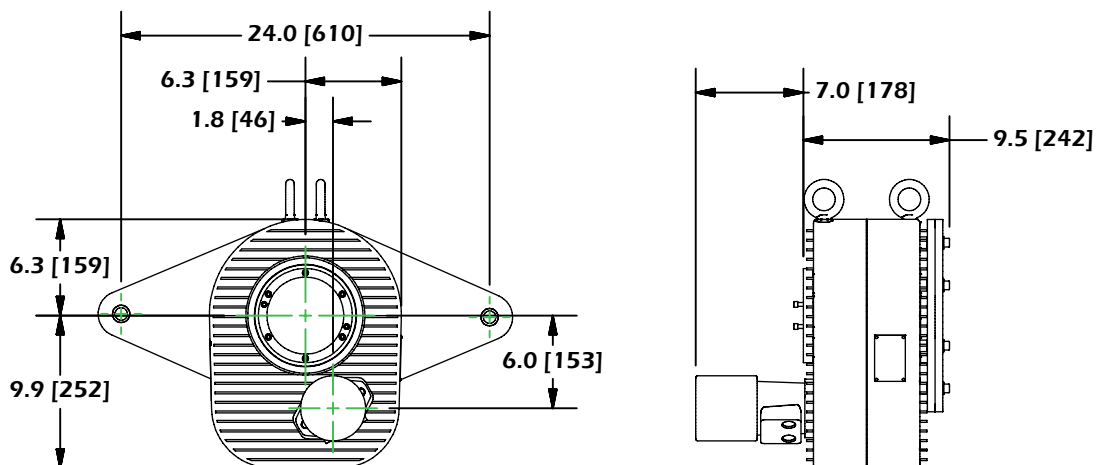
Mechanical Axial Feed Assembly



Electrical Axial Feed Assembly



Rotational Drive Unit



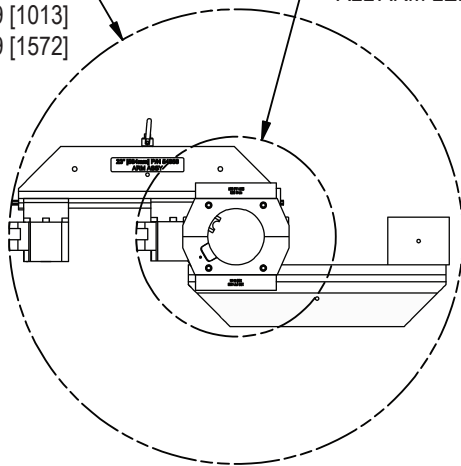
OPERATIONAL DIMENSIONS

Dimensions in Inch (mm)

Boring/facing arm configurations

MAX FACE/BORE

18 [548] Ø29.9 [759]
 23 [584] Ø39.9 [1013]
 34 [864] Ø61.9 [1572]

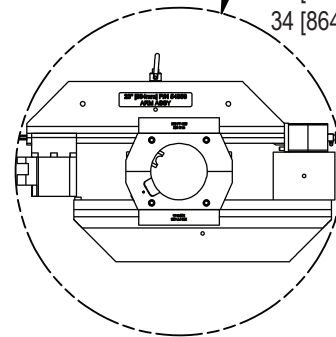


MIN FACE

ALL ARM LENGTHS Ø17.8 [452]

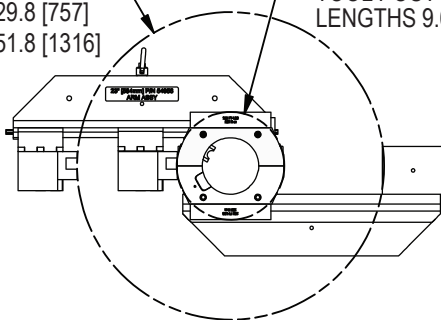
MIN FACE SWING

18 [548] Ø24.3 [618]
 23 [584] Ø29.2 [742]
 34 [864] Ø40.0 [1016]



MAX FACE TOOL POST REVERSED

18 [548] Ø19.8 [503]
 23 [584] Ø29.8 [757]
 34 [864] Ø51.8 [1316]

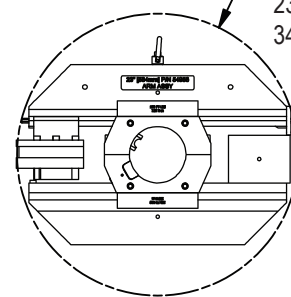


MIN FACE

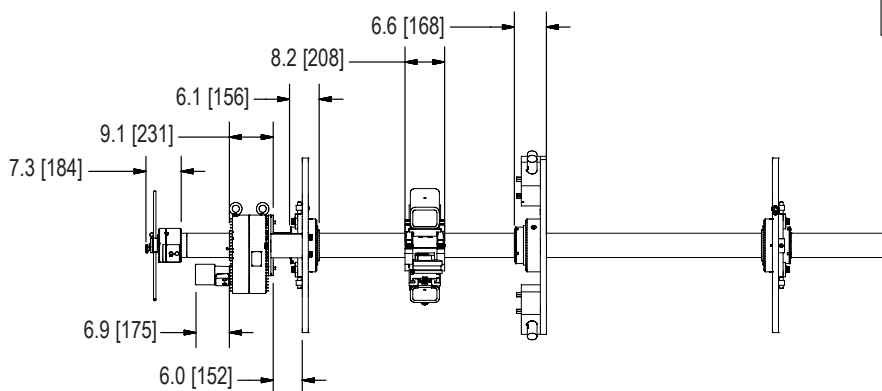
TOOL POST REVERSED ALL ARM LENGTHS 9.6 [244]

MIN BORE

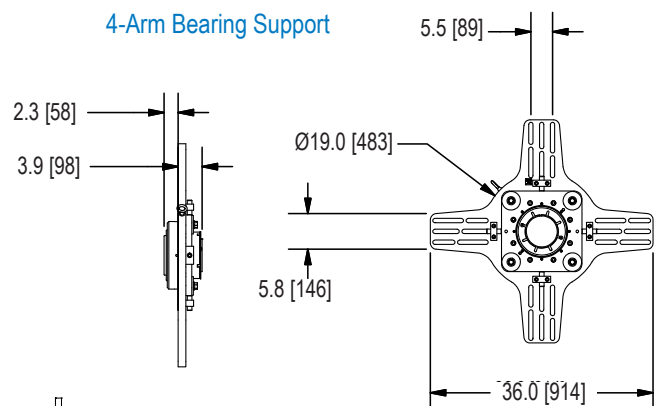
18 [548] Ø22.1 [562]
 23 [584] Ø25.1 [638]
 34 [864] Ø35.9 [912]



Side view, boring/facing arm assembly



4-Arm Bearing Support



OEM PROFESSIONAL OPERATIONAL TRAINING



Backed by Over 50 Years of Experience

CLIMAX pioneered the concept of portable machine tools in 1964. Since that time, CLIMAX has grown to become the world's largest provider of innovative on-site machining solutions.

Professional, Experienced Instructors

All training programs are taught by experienced OEM CLIMAX trainers. Your instructor will provide valuable information on operator safety, tool set-up, mounting, and operation that will help you complete your on-site machining tasks quickly and to the highest quality standards. Part number 00042

Typical Courses Include:

- ✓ Operator safety
- ✓ Tool component review and setup
- ✓ Standard operational techniques
- ✓ Overview of cutting tools and recommend usage
- ✓ Maintenance procedures
- ✓ A certificate of achievement - issued to each student immediately following course completion

Sign up today for training at one of our **eight** Global CLIMAX training centers.

- Portland, Oregon
- Houston, Texas
- Baton Rouge, Louisiana
- Cleveland, Ohio
- Manchester, United Kingdom
- Düren, Germany
- Dubai, United Arab Emirates
- Dammam, Saudi Arabia



CLIMAX GLOBAL LOCATIONS



Call CLIMAX for:

RENTALS

On selected models. With 20+ worldwide rental depot locations, you are never far away from CLIMAX.

OEM TRAINING

If you need training or on-site consultation, we're famous for it!

SPARES, REPAIR & MAINTENANCE

Call us for anything you need to keep your system running in top condition.

CUSTOM PROJECTS

Custom turn-key system design services from the most experienced engineers in the business!

Follow us on:   

World Headquarters

Address: 2712 E. 2nd St, Newberg, Oregon 97132
Tel: +1 503 538 2185
Fax: +1 503 538 7600
Email: info@cpmt.com

Asia Pacific

Address: 10, Raeburn Park, #02-08, Singapore 088702
Tel: +65 6801 0662
Fax: +65 6801 0699
Email: ClimaxAsia@cpmt.com

European

Address: Am Langen Graben 8, 52353 Düren, Germany
Tel: (+49) (0) 2421 9177 0
Fax: (+49) (0) 2421 9177 29
Email: ClimaxEurope@cpmt.com

Middle East

Address: C9, Phase 5, Light Industrial Units, DSO, Dubai, UAE
Tel: +971 4 321 0328
Email: ClimaxUAE@cpmt.com

United Kingdom

Address: Unit 3 Martel Court, S.Park Business Park, Stockport SK1 2AF
Tel: +44 (0) 161 406 1720
Email: ClimaxUK@cpmt.com

Copyright © 2023 CLIMAX Portable Machining & Welding Systems. All Rights Reserved. CLIMAX has taken reasonable measures to ensure the accuracy of the information contained in this document. However, CLIMAX makes no warranties or representations with respect to the information contained herein; and CLIMAX shall not be held liable for damages resulting from any errors or omissions herein, or from the use of the information contained in this document.

